



Bwrdd Partneriaeth
Rhanbarthol Gwent
Gwent Regional
Partnership Board

Social Value Forum
Progress Report
March 2019 – June 2022
Gwent Regional Partnership
Board

CONTENTS

| | |
|---|----|
| 1. Foreword | 3 |
| 2. Context | 4 |
| 3. Establishment of a Regional Provider Forum in Gwent | 5 |
| 4. Stakeholder Engagement | 7 |
| 5. Provider Feedback | 8 |
| 6. Key Achievements 2019-2022 | 8 |
| 7. COVID-19 Pandemic working | 10 |
| 8. Aspirations of the Gwent Provider Forum | 11 |
| 9. Contributions of the Gwent Provider Forum to the PNA and MSR | 12 |
| 10. Future Development/work programme for next 3 years | 12 |

1. Foreword

I am delighted to be invited to write a brief introduction to the second Triennial Social Value Report as Gwent Provider/Social Value Forum representative on the Gwent Regional Partnership Board. The Regional Partnership Team in Gwent has always been keen to work alongside providers of all sectors to build a health and social care system which is rich and diverse. Indeed, when the opportunity arose to develop a specific third sector only Social Value Forum the consensus among forum members was that this was not needed as the current arrangements adequately served that purpose - a refreshing approach that enables providers to come together and to focus on what matters for citizens. However, with the development of regional and national models of care in line with RPB guidance and a particular focus on 3rd sector organisations, this will be explored further over the summer of 2022. The combination of workshops and business meetings seems to be working well and a continued collaborative and co-productive approach is much valued by members both private and third sector providers alike.

Post pandemic I am looking forward to building on the solid foundations first established back in 2015. This report sets the progress made since the last triennial report despite the global interruption to 'business as usual' and I look forward to being part of developing a new and exciting agenda for the future.

Melanie Minty (Care Forum Wales)

Gwent Provider/Social Value Forum Representative, Gwent Regional Partnership Board

2. Context

Social Services & Wellbeing (Wales) Act 2014

Section 16 of the Social Services and Well-Being (Wales) Act 2014 places a duty upon local authorities to promote the development of not-for-profit organisations to provide care and support services and preventative services. These models include social enterprises, co-operatives, user led services and the third sector. The Code of Practice in relation to this duty requires local authorities with health board partners to establish regional forums to support social value-based providers to develop a shared understanding of the common agenda, and to share and develop good practice. The aim of this forum is to encourage a vibrant social value sector which is able to make a contribution to service delivery opportunities.

A report must be published every three years on the activities of the forum, and how it has contributed to the delivery of duties under section 16. The first report was published in March 2019. This document provides an update of social value activity for the period 2019 to 2022.

Whilst it is acknowledged that a wide range of organisations from across both public and private sectors do offer 'social value opportunities' and as such should contribute to the work of the Social Value Forums, it is important to note that the 'Social Value Sector' itself is defined (narrowly) within the context of section 16 of the Social Services and Wellbeing Act which refers specifically to Social Enterprise, Co-operatives and the Third Sector.

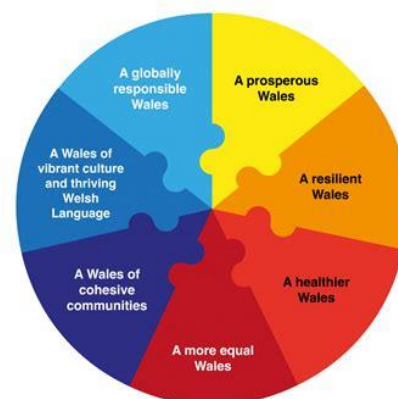
Well-being of Future Generations (Wales) Act 2015

The Well-Being of Future Generations Act requires public bodies to think and behave differently, with the principle of sustainable development at the core of all decisions and actions. This ambition means that organisations in the private and third sector, as well as individuals and communities are also able to contribute to the new agenda.

People may interpret the idea of social value differently, but at its core, it is about understanding what has changed in someone's life as a result of particular activities and valuing those changes.

The Act seeks to improve 'the social, economic and cultural well-being of Wales' and there are five keyways in which public bodies are now required by law to do things differently. These are:

- Ensure that decisions have a positive and long-term impact for the future.
- Understand the integrated impact of decisions.
- Involve the people that are served.
- Collaborate to find common solutions.
- Actively prevent problems occurring or becoming worse.



Underpinning the need to act differently are 7 well-being goals, which are the blueprint for a shared vision of the kind of Wales that people want (see diagram). Public bodies (through the Regional Partnership and Regional Public Service Board) must work towards the accomplishment of all of the well-being goals, and importantly set and publish their objectives, and take all reasonable steps to accomplish them.

3. Establishment of a Regional Social Value Forum in Gwent

With the advent of the Social Services and Wellbeing (Wales) Act 2014 and the introduction of Regional Partnership Boards, a Gwent Provider forum was established in February 2015. The forum has continued to meet and has elected a chair to sit on the RPB and ensure a provider voice at each meeting. The Provider Forum terms of reference are included as appendix 1 and was recently updated in August 2021. The forum includes a number of partners and considers various issues requiring a partnership approach including the development of social value opportunities and thus takes on the role of a Social Value Forum.

The Welsh Government commissioned the Wales Co-Operative Centre to co-produce a toolkit for understanding and promoting social value in the delivery of care and support services and support the development of Social Value Forums to deliver on the duties detailed above. The toolkit was published in mid-2018: [Care to Co-operate Toolkit \(wales.coop\)](#) and is aimed at social value organisations, Regional Partnership Board and current and prospective providers, including the rich mosaic of third sector organisations delivering social value care support services in Wales.

The toolkit:

- Sets out how the third sector, user-led organisations, co-operatives and social enterprises have an important and specific role in transforming services and encouraging the provision of thriving social value sector; co-producing with citizens and the community to develop services to meet their needs.
- Provided information on the role and remit of Social Value Forums and wider social value networks and how organisations across sectors can generate a creative and dynamic environment to share new ideas, think strategically, develop collaborations and support seamless provision across health and social care services.

However, a further toolkit is now under consideration and the Gwent Regional Partnership Board supports this development as the environment post-pandemic has changed and a refreshed approach is needed. The Gwent Provider Forum will continue to act as a Social Value Forum and to provide opportunities to share good practice and to cultivate innovation in the design of future care and support services through alternative delivery models: and the toolkit will be instrumental in continuing with this ambition.

Provider Forum Background

The Provider Forum was established following a workshop attended by over 40 people from 30 organisations in March 2015. Organisations included both the third and independent sectors. There was consensus agreement to go forward with a regional provider forum and some clear guiding principles and points set out:

- Clear Terms of Reference – reporting mechanisms also clear, stating that the group report into RPB.
- Focus on the Act and its themes

- Outcome's, actions and clear milestones
- Focus on Quality services to meet needs (and identify gaps)
- Change required for provider services to meet individual needs- e.g. Direct Payments
- Commissioning methods may need to change
- Identify the challenges in the Act for providers
- Clear linkage to citizen forum

A first meeting for the Provider Forum was in April 2015, and there was initial agreement to:

- meet four times a year; to report to the Regional Partnership Board to focus on the elements of the Social Services and Wellbeing Act for the first two years;
- for the forum to act as an information conduit for all partners (both to and from other groups/organisations).

The initial terms of reference also set out responsibilities of provider forum members as:

- *Commitment to the Partnership Board work streams, the forum work plan and the needs of citizens*
- *Identify priorities to include in a subsequent work plan on an annual basis to support the Partnership*
- *Board improve and develop Health, Social Care and Wellbeing services, linked to the Social Services and Wellbeing Act.*
- *Providing summary information in an open and transparent fashion*
- *Commitment to support local project initiatives and share learning*
- *Provide a clear voice for provider organisations to be heard by the regional sector governance body*
- *Ensure that personal and individual organisation issues are directed to appropriate local resolution. For example individual commissioning issues or fees levels are not appropriate for this regional strategic forum, but key commissioning themes or general charging policies may be.'*

The regional provider forum met in 2015 on three occasions, after a first 'planning' meeting in April, with the meetings being in June, August and October. The forum has subsequently agreed to meet every 5 weeks and continued to meet through 2016 to 2019.

In 2020 the COVID pandemic intervened and caused provider meetings to be held on a more sporadic basis as providers faced the quickly changing landscape associated with the COVID-19 pandemic. Meetings were held during the lockdown period to discuss ongoing issues that providers were experiencing, implementation of COVID-19 requirements and legislation and to ensure providers remained supported with COVID-19 related issues and practices.

Attendance at the forum was often low and began to drop significantly as the pandemic progressed. As a result, providers attended a consultation workshop in Autumn 2021 to determine how they wanted to progress with the forum meetings, what they wanted to ensure was delivered by the forum and the content of the standardised agenda going forward post Covid-19 pandemic.

The forum agreed that meetings were interspersed with workshops, providing information on new legislation or issues relating to their working practices. The first workshop was held in early 2022, focussing on the new legislation around Liberty Protection Safeguards, and subsequent workshops are scheduled for the remainder of 2022 and often determined by providers.

Standardised agenda will now focus on provider issues, the contribution of social value, workforce issues and funding availability for providers, with the emphasis on collaboration across the Gwent Region. Provider forum representatives attend each Regional Partnership Board meeting, to ensure that providers are represented and priorities for the group are aligned to the priorities of the RPB

4. Stakeholder Engagement

From the outset, having sought confirmation from Welsh Government in Autumn 2015 whether the intent was for a 'third sector only' body, the Gwent Regional Provider Forum has set out to be open to any provider in the Region. Any provider can ask to be on the email distribution list, and all are asked if they are happy to share details. Email is the primary form of communication, with any provider able to ask for information to be distributed, going through the regional partnership team who provide logistical support to the forum. This includes events, newsletters, opportunities for award nominations, mapping information, secondment opportunities open to all, Welsh Government information, Social Care Wales information etc.

A process was also put in place for the forum to elect two representatives to the Regional Partnership Board, through seeking nominations from the group and asking all who had agreed to be part of the forum to vote.

Representatives to RPB serve for 2 years, and then re-election takes place. Terms of reference have also been reviewed, and membership is currently at approximately 80 individuals on the mailing list.

Providers are encouraged to input to the agenda for forum meetings and this has included information on RISCA, a regular slot on training events and opportunities, presentations on new services and relevant information, updates on commissioning, updates on COVID-19 related issues and updates from the Portfolio Management Office on funding opportunities. The Regional Partnership Team are also in the process of hosting a central point for resources information also, as requested by providers.

The local CVC's GAVO (Gwent association of Voluntary Organisations), TVA (Torfaen Voluntary Alliance) and the Provider Forum were asked specifically if they would wish to establish a separate SVF for third sector only organisations. The response was unanimous in acknowledging the importance of ensuring the Provider Forum is inclusive but recognise that only 3% of third sector services are commissioned by Health and Social Care and were supportive of an additional third sector collaborative forum.

5. Provider feedback

"The Regional Provider Forum has been a valuable asset in Gwent Social Care Provision - it enables both statutory, independent and third sector providers to meet, contact and share information in a timely manner. It is a point for consultation and feeds into the Gwent Partnership Board overarching strategic direction for Gwent. Opportunities for regional funding are channelled through this Forum, enabling equity and opportunity for service provision and collaboration."

Torfaen Voluntary Alliance

"The sharing of relevant updates re Covid was very useful, especially getting other views on managing such a changing crisis. Increased cross service knowledge and understanding was useful, even when it didn't pertain to care homes, as I knew that I could always access info if needed e.g. student placement. I found it good to feel connected, especially during the lock downs."

Care Home Provider, Monmouthshire

6. Key Achievements 2019 – 2022

Case Studies and Promotion of Social Value

There are several co-operatives in place across the Gwent Region, supported and commissioned by the Local Authorities. These services primarily relate to domiciliary care and day services.

- **Cartrefi Cymru** is an established co-operative operating in Torfaen and Blaenau Gwent. Established by a group of parents who wanted to provide person centred care for individuals with learning disabilities, the service has now expanded to provide day services, supported living, domiciliary care services and community support to those living with learning disabilities. The service continues to be commissioned by local authorities in Gwent and representatives from Cartrefi Cymru regularly attend the Regional Provider Forum, highlighting the importance of social value in services.
- A second co-operative is **Able Radio** and was supported by Torfaen County Borough Council to become an established day service, providing support to individuals living with learning disabilities. Initially hosted in a TCBC building, the service supports individuals to gain new skills, particularly in media. Individuals attending the service host their own radio station and learn about media development and distribution. The service has also expanded to provide individuals with everyday living skills, growing a selection of produce throughout the year and selling items in their own shop. The service has now expanded and hosted in their own facility in Torfaen.
- **My Mates** was a pilot established by Monmouthshire County Borough Council, funded by Integrated Care Fund (ICF). This project placed an emphasis on social value in supporting individuals in the Locality living with Learning Disabilities and mental health issues. The service aimed to work with individuals to develop a personalised care plan, centred around the individual's set objectives. It became evident that individual objectives were often very different from those of carers or those set by social workers, so staff and volunteers worked with individuals to achieve these outcomes. These often included learning valuable life skills such as shopping independently, or travel training. Through development of the service, peer support groups were rapidly established, and individuals were supported to become integrated into their communities. Some examples of outcomes were individuals who were supported to attend a night-club in Cardiff City Centre, supported to identify and communicate their sexuality and supported into volunteering and employment opportunities. The project was so successful that the project is now Gwent-wide and offered in all Localities. Staff from My Mates are included on the membership for the Regional Provider Forum and continue to emphasise the importance of social value in services.
- **Gwenu** is a social value provider of support to people living with dementia in Blaenau Gwent. Volunteers, some living with dementia or carers of people living with dementia, support other people in the community with activities and a chance to provide peer to peer advice and support. All of the volunteers have completed Alzheimer's Society Dementia Friends awareness and work out of various venues across the borough. The group also run a Facebook page to provide advice and also work in partnership with Registered Social Landlords providing social housing where they have organised weekly activities. Unfortunately the pandemic curtailed face to face events but the group are looking to restart provision when safe to do so. Members of the Regional Provider Forum also attend regular Community of Practice forums hosted by Welsh Government, with the aim of promoting social value on chosen subjects, including the development of wellbeing hubs across the Gwent Region.

- **Skills for Living** is an alternative residential provision established by Action For Children, supporting young people aged 16-25 who have experienced significant emotional distress and have complex mental health needs. The project supports the reduction of difficult emotions by reducing unhelpful coping strategies such as self-harm, drug and alcohol use, and risk-taking behaviours, helping young people maintain healthier relationships and encourage positive self-esteem. Referrals to the team are accepted from all Local Authorities and via SPACE wellbeing, as well as young people and their carers. The project has proceeded to facilitate group therapy sessions and offers clinical consultations with young people and provides training for professionals. The ICF funding has also enabled the establishment and extension to care leavers training. The success of the project has demonstrated the positive impact on the beneficiaries of the service, with improvement of mood, wellbeing and a reduction of young people being a risk to themselves and others.
- **Family Intervention Team (FIT)** is delivered by Action For Children, providing early intervention for families where there is complexity of needs and where a family-based, community-delivered approach is indicated. The service is offered to children and young people and their families which uses psychological formulation as an alternative to diagnosis and helps destigmatise the difficulties experienced. Through the delivery of a psychologically informed 12-week intervention that is systemic in nature, the service ensures a whole family, bespoke approach. It includes the ideas that difficulties can be managed by families with support at times, and this support can set them on a journey of change. This is empowering to families, not just in the time of support but gives them a recognition of their own strengths and resources and a deeper understanding of concepts such as child development, distress tolerance, incremental change, the power of relationships to help the process of change.
- **Platform 4YP**, delivered by Platform, brings young people aged 14 – 18 together to empower each other through the discovery of shared experiences and stories of recovery. The team work with young people who are experiencing challenges with their mental health and wellbeing. Young people don't need a diagnosis to access the service, and work with any young person who may be struggling. Platform work with young people on an individual and group-based level to develop skills and find ways that work for them to manage their wellbeing so that they can live healthier, happier, and more fulfilled lives. Platform provide opportunities for young people to train as peer mentors and pass on the knowledge they have learned. Platform 4YP's overall aim is to provide early access to support, improve young people's overall wellbeing, create a sense of connection/reduce isolation and to create a network of peer support across Gwent.
- **Sexual Awareness for Everyone (SAFE)**, delivered by Volunteering Matters, works with individuals with a learning disability aged 16-35 years old, increasing the knowledge and understanding of healthy relationships and sexual health of males with learning disabilities or autism. It also aims to improve the understanding of the negative impact of pornography through access to information and peer support with the aim to reduce the risk of these males participating in risky sexual behaviours. The project delivers through a person-centred approach providing bespoke content delivered through workshops and one to one sessions. It receives referrals from social services or other social care providers for either, group or 1-to-1 work with the project team on a case-by-case basis.
- **Preventing & Mitigating Sight Loss, delivered by Sight Cymru**, provides a bridge for patients to get earlier and improved access to non-clinical services according to the patient needs. The project's Eye Clinic Liaison Officers (ECLO) help patients understand their diagnosis, to give emotional support, guidance through sight loss registration and wherever possible to smooth the access to services. The project's ECLO roles are based proportionately within 7 eye clinics

across the region (3 acute hospital & 4 community settings) and allows for better resource distribution and referral pathway to rehabilitation programmes for those with sight impairment with Sight Cymru.

- **Third Sector Small Grants Scheme** has been established through the County Voluntary Councils, Gwent Association for Voluntary Action (GAVO) and Torfaen Voluntary Alliance (TVA) to host the small grants fund, with a funding allocation of £200,000 per year, distributed between each of the locality areas, being promoted across the Integrated Partnership Board and social value/third sector in the respective locality. The small grant scheme supports the work of the Integrated Care Fund (ICF) and all activity funded will have one or more of the ICF priority areas at its centre.
- **Third Sector Development Lead** role has been established through partnership with Torfaen Voluntary Alliance in the creation of an opportunity for the third sector to have a dedicated role within the Portfolio Management Office (PMO). As social value delivery partners are key partners within the region our regional partnership and regional programmes and increased engagement with the sector through the role, this has been embedded within the PMO team.
- **Integrated Care Fund** at the outset of 2021-2022, 18% of investment was achieved for social value, with the year-end position owing to slippages, achieving 17% of investment to support the priorities set out in the ICF guidance.

7. Covid-19 Pandemic Working

The Provider Forum Terms of Reference set out some key aims and objectives:

- To ensure that Service Providers to constructively influence the development of the strategic partnership arrangements in Gwent, Regional Partnership Board and to share information.
- To hold to account provider representatives on the Regional Partnership Board
- To share information and exchange views on local, regional and national developments.
- To provide an arena where links to the strategic partnerships can be discussed and developed.
- To build and maintain a constructive and effective working relationship between providers and commissioning organisations to encourage and supporting a contact network.

From March 2020, the Provider/Social Value Forum was suspended in line with Government advice. The priorities of all Local Authorities and Health Boards changed and organisations were tasked with finding new ways of working and continuing to deliver critical services. This meant that the progress on meeting aims and objectives of the Provider/Social Value Forum above, temporarily halted, and the priority became to ensure that organisations were as supported as possible, were provided with suitable resources such as PPE and were provided with valuable, relevant information when available. Providers across the region began to engage more frequently with commissioning bodies, ABUHB infection and prevention teams and Public Health Wales. For this reason, members requested that meetings also be held less frequently, to allow them to prioritise the needs of their services.

Due to the quickly changing legislative landscape due to the COVID-19 pandemic, guidance changed frequently, so information-sharing and networking became invaluable. Communication channels were kept open with providers and eventually were re-established through weekly webinars for care home providers, domiciliary care services and third sector partners. These webinars were critical in working effectively with the sector over what was to become a very difficult and sustained period. The success of these webinars owes much to the open co-productive approach taken over many years with service providers in Gwent. Long gone are the days of adversarial relationships between suppliers and commissioners. The meetings continued on a

weekly/fortnightly basis throughout 2021, dependent on the numbers of COVID-19 cases present in the community and continued to do so until early Spring 2022.

COVID-19 had a significant impact on the Social Value Forum discussions. Attendance at meetings began to reduce rapidly, due to availability of staff and amended priorities within their services. Most organisations had issues with staffing numbers due to initial shielding advice and isolation guidance for COVID-19 positive individuals and staff recruitment and retention numbers remained low, meaning services reached critical levels.

8. Aspirations of the Gwent Provider Forum

The attendance of the group had traditionally been limited to third sector providers, social enterprises and co-operatives, and providers of support services such as mental health and learning disability support, but the group requested that this be extended to all providers in the Gwent region; including domiciliary care, supported living and care home providers. The group suggested that by ensuring the attendance was as inclusive as possible, this would provide excellent opportunities for networking and information sharing. Many providers, regardless of their area, experience similar issues such as staffing, and the group suggested that open discussions across the sectors would be beneficial. For this reason, the title was changed from 'Forum' to 'Network'.

Traditionally, forum meetings had been held on a 5-weekly basis. The group requested that meetings be held on a quarterly basis, following a standardised agenda, but interspersed with workshops. The workshops will provide focussed information sessions on subjects of relevance to providers. The first workshop was held in February 2022 and provided information on the forthcoming LPS legislation. Additional workshops are planned for the remainder of 2022 on subjects including the processes and implications of the real living wage implementation and workforce support. Additional workshops will be provided as required, particularly with the release of new legislation.

The standardised agenda was amended as requested to reflect the priorities of the Gwent RPB and inclusive of the priorities of all Gwent strategic partnerships. This enables the group to understand the strategic priorities of the strategic partnerships in the region. The Gwent Adults Partnership for example also has representatives of the provider forum as full and vociferous members. The Partnership Portfolio Management Office will not only support the development of the Third Forum collaborative Forum, but also will continue to work with the Regional Provider Forum on the development of the national models of care and will continue to provide updates and developments of the Regional Integrated Fund for providers; COVID related issues will continue to be discussed and an opportunity for discussions around resources available to providers, in addition to the Regional Partnership Team managing a central list of resources available (e.g. training provider etc.)

Members suggested that the purpose of the group needed to be re-established, with the priorities of the group and the content of standardised agenda items being aligned to the priorities of the RPB, but also linking closely with the strategic partnerships in Gwent. Information sharing also needed to be a priority for the group. The terms of reference were amended to reflect this and topics from recent minutes include:

- National and Local Recruitment initiatives
- Welsh Government COVID-19 compliance legislation
- COVID-19 testing and isolation guidance
- Provider issues from members
- Meetings with Coleg Gwent
- Regional Market Position statement
- Recruitment and retention (and training updates)
- Social Value Forum toolkit feedback

9. The Contribution of the Gwent Provider Forum to the PNA and MSR

The Gwent Population Needs Assessment and the Regional Market Stability Report have been published in line with Government expectations. Both have been developed in collaboration with Commissioners from all Local Authorities in Gwent, Health Board representatives, Citizens and Gwent Regional Provider Forum.

The Population Needs Assessment was developed in line with statutory guidance and included a market position statement under each of the statutory themes. A link to the Gwent PNA [HERE](#) This ensured there was a focus on challenges that providers of care and support experience and will be considered when developing the new Area Plan.

The Market Stability Report particularly highlights the effects of COVID-19 on the provision of care across Adult Services, Children's Services, Mental Health and Learning Disability Services, Day Services and Carers. The Gwent Regional Provider Forum is attended by providers from all of these sectors, so their contribution to the MSR was critical in ensuring that an accurate representation of services in Gwent were provided.

Initially, information was sourced from Commissioners on the services commissioned across the Region, alongside relevant data. When initial drafts were completed, the MSR draft was presented to the Gwent Regional Provider Forum for consultation and to ensure that all information was relevant.

10. Future development / work programme for the next 3 years

The Regional Provider Forum will continue to meet on a quarterly basis for the next three years, following a standardised agenda linked closely to the priorities of the RPB and the strategic partnerships. The Provider forum network will also continue to facilitate a social value forum and promote and develop the work of the Social Value Providers over the next three years, linked to the key strategic priorities set out in the Population Needs Assessment and Market Stability Report.

The Regional Partnership Team will continue to support the Provider Forum/Network and ensure meetings are held and share information on national, regional and local events from Welsh Government, Social Care Wales, commissioners, individual forum members, and other sources. As we move out of the pandemic the forum/network will plan to meet more regularly, including some face-to-face events, such as the Gwent Dementia Conference in September 2022, where there will be a focus on social value providers.

Agenda topics are determined from meeting to meeting but with some regular recurring topics such as PMO and finance opportunity updates (Integrated Care Fund/Regional Integration Fund), recruitment and retention, regional commissioning, feedback to and from RPB, provider issues, upcoming events, training. However, an emphasis will be placed on the following:

- Developing the Joint Area Plan by March 2023 - Representatives from the Regional Provider Forum are actively linked to the Regional Partnership Board, providing provider representation at the Regional Partnership Board meetings as well as the underpinning strategic partnerships
- Actively supporting the 'rebalancing' of the social care market through work with local authority and health board commissioners and the Regional Commissioning Group
- Informing the development of strategic capital plans through the Health Housing and Social Care Partnership,

- Ensuring the social value sector play a key role in planning and as delivery partners in building the 6 national models of integrated care as set out in the Regional Integration Fund (RIF) guidance and the Provider Forum regularly link with the Portfolio Management Office.

The Regional Provider Network aims to build on some key elements listed in the Regional Integration Fund Guidance. The standardised agenda focusses on the following items:

- A focus on prevention and early intervention
- Sharing learning
- Sustainable long-term resourcing to embed new models of care, supported by the Portfolio Management Office.
- Consistent investment in Regional planning and partnerships.
- Providing strategic support and challenge to the RPB in relation to the 20% investment of the RIF in social value sector delivery partners.

The Regional Integrated Fund will establish a National Third Sector Collaborative Forum that will report into the Regional Provider Network and support collaborations to be holistic in the efforts in responding to the model of care and ensure that existing third sector resources are also aligned within the model of care. The forum aims to strengthen the knowledge and understanding of wider Third Sector organisations, as key delivery partners to increase engagement, shared learning and collaborations.

Through the Regional Integration fund, open access to capital funding has been promoted to all partners including the Provider Forum and Third Sector. The Welsh Government's Housing with Care Fund, managed by the Partnership and Integration Portfolio Management Office (PMO), provides a unique opportunity for the Third Sector to access and work with partners on the delivery of capital funded projects. Consultation has taken place on the guidance and application processes for the Capital funding with a range of partners. The PMO can assist with the application process and offer guidance to partners. Upon submission of applications, the Integrated Capital Planning Group will provide a cross sectoral view on the applications. Successful applicants will need to complete their projects by the end of March 22. There is however, a 3-year funding allocation and there is the possibility for funding for projects to be awarded over a 3-year period, should schemes not be able to be delivered in once financial year.



Gwent Regional Provider Network

Terms of Reference August 2021

FINAL VERSION

1. Values

- The Gwent Regional Provider Forum (Forum) will at all times strive to be:
 - solution-focussed;
 - sharing;
 - open and inclusive;
 - transparent;
 - anti-discriminatory;
 - equality across providers

2. Aims

- To ensure that Service Providers to constructively influence the development of the strategic partnership arrangements in Gwent, Regional Partnership Board and to share information.
- To hold to account provider representatives on the Regional Partnership Board

3. Objectives

- To share information and exchange views on local, regional and national developments.
- To provide an arena where links to the strategic partnerships can be discussed and developed.

- To build and maintain a constructive and effective working relationship between providers and commissioning organisations to encourage and supporting a contact network.

4. Membership of group

- Gwent care and support providers and contracted to provide eligible services in Gwent.
- Other relevant stakeholders will be invited to attend, as and when agreed to be necessary and appropriate.
- Supporting People Officers will be invited to the group as and when agreed to be necessary and appropriate.

5. Frequency of meetings

- The Network will meet on a quarterly basis, to match the frequency of the Regional Partnership Board and will usually take a half day. The Network will meet virtually between face to face sessions.
- Dates will be circulated in advance at the beginning of the year

6. Format of meetings

- An Agenda will be sent out by the Gwent Regional Partnership Team a minimum of 6 days before the meeting.
- Standing Agenda Items will be:
 - Welcome and introductions
 - Regional Partnership Board Update from the Support Provider Representatives
 - Workshops or Presentations; which will be facilitated by the Chair and Deputy Chair or Forum members or invited guests.
 - Information sharing session
 - Any other Business
 - Date of Next Meeting

7. Chairing arrangements

- A chair and Deputy chair (chairs) will be elected by Forum members

- The Chairs will hold office for a three-year period.
- The Chair or Deputy Chair should not be current provider representatives on the Regional Partnership Board.
- The Chair will be responsible for facilitating and enabling necessary joint discussion.
- The Chair, will provide assistance to, and advocate for other members of the forum as required.
- A member of the forum who wishes to stand as a candidate for the office of Chair should send confirmation of their intention to stand to the current Chair and Vice Chair in December of each year.
- If only one nomination is received for a position then without reference to the wider membership of the group they will automatically be appointed as Chair and their appointment confirmed at the next meeting.
- If multiple nominations are received then the current Chair and Vice Chair will send the list of candidates and their supporting information out with the agenda, and a secret ballot will take place during the January meeting to determine the office holders (one vote per agency). The successful candidate(s) will be determined by simple majority; the candidate with the most votes will be Chair, the candidate with the second highest amount of votes will become the Deputy Chair.
- The Deputy Chair will chair the meeting in the absence of the Chair.

8. Practice roles and responsibilities

- It is the responsibility of the Regional Partnership Team to facilitate the Forum and provide an appropriate venue, services and administrative support for its meetings.
- Members will not use the Forum as an arena for the airing of individual concerns or complaints.
- Members will actively participate in the Forum and commit to regular attendance. In circumstances when attendance is not possible, members will make every effort to arrange for a delegated representative to attend.
- Agendas will be sent out to Forum members at least 6 days prior to the date of the meeting.
- The notes of Forum meetings will be sent out to all members within 6 days of the date of the meeting.

9. Equality

- The Forum will not tolerate any form of discrimination or prejudice and any such behaviour will result in exclusion from the Forum.
- The Forum will be held in an accessible venue.

10. Review

- Terms of Reference for the Forum will be reviewed and, where necessary revised, each year in January.