

# Rapid Innovation Initiative

---

## Application Process



Llywodraeth Cymru  
Welsh Government



Bwrdd Partneriaeth  
Rhanbarthol Gwent  
Gwent Regional  
Partnership Board



# Rapid Innovation Initiative: Introduction

The Gwent Regional Innovation Coordination Hub (GRICH) has developed a Rapid Innovation Initiative to support new ideas, innovative proposals, or the wider adoption of existing innovative schemes that can improve outcomes for citizens across Gwent.

We are looking for opportunities that could deliver significant benefits across a local authority area or across the whole Gwent region. Successful projects will receive time-limited support for development and implementation.

The Rapid Innovation Initiative can fund up to £150,000 in 2026–27. Proposals will be considered against the total funding available. The amount awarded will depend on the number of proposals received and how well each proposal meets the agreed criteria. Applicants are encouraged to include different costed options where appropriate.

Funding can be used to support pump-priming, testing, implementation or wider adoption of innovative proposals that improve outcomes and value across health and social care in Gwent.



# Rapid Innovation Initiative: About Us

---

Supported by Welsh Government, the seven Regional Coordination Hubs, governed by Regional Partnership Boards across Wales, aim to:

- coordinate research, innovation and improvement across the region
- adopt and adapt evidence-based innovation and improvement activity, using an evidence and value-based approach to measure quality and outcomes
- invest in a small number of priority areas that offer opportunities to improve health and social care through new approaches, emerging technologies and strategic partnerships

The Gwent Regional Innovation Coordination Hub (GRICH) is dedicated to fostering a culture of innovation across health and social care in Gwent. Our ambition for 2026–27 is to support service delivery, improve community well-being and encourage collaboration through innovative approaches.

Building on previous years' success, this year's initiative will emphasise strategic alignment with Gwent Marmot Region priorities and the needs identified by the Gwent Regional Partnership Board.

## Key Strategic Aims:

- **Foster innovation:** promote a culture of innovation in Gwent, encouraging the development and adoption of new ideas, processes and technologies.
- **Enhance collaboration:** promote collaboration and networking across organisations and sectors to share knowledge, resources and good practice.
- **Improve service delivery:** improve the efficiency and effectiveness of public services, especially in health and social care, to better respond to community need.
- **Support evidence-based adoption:** support the adoption and adaptation of evidence-based innovation across health and social care in Gwent, with ongoing evaluation, learning and refinement.

# Rapid Innovation Initiative: Priority Themes

The Gwent Regional Partnership Board through the RICH have prioritised '**Identification of new ideas and the ability to support small concepts of change across health and social care that have the potential to spread and scale into mainstream adoption**'.

Concepts of change will need to link the priorities identified in the RPB's Population Needs Assessment and Area Plan.

Welsh Government Core Theme	Outcome Priority
Children and Young People	<ul style="list-style-type: none"> <li>To improve outcomes for children and young people with complex needs through earlier intervention, community-based support, and placements closer to home.</li> <li>To ensure good mental health and emotional wellbeing for children and young people through effective partnership working especially mitigating long term impact of Covid-19 pandemic.</li> </ul>
Older People including Dementia	<ul style="list-style-type: none"> <li>To improve emotional wellbeing for older people by reducing loneliness and social isolation with earlier intervention and community resilience.</li> <li>To improve outcomes for people living with dementia and their carers.</li> <li>To support older people to live, or return following a period of hospitalisation, to their own homes and communities through early intervention, integrated care models and a whole system approach.</li> <li>To mitigate the long-term impact of Covid-19 pandemic through, especially reducing waiting lists and times to access support, appointments, and medical procedures</li> </ul>
Health and Physical Disabilities including people with sensory impairment	<ul style="list-style-type: none"> <li>To support disabled people, including sensory impairment, through an all-age approach to live independently in appropriate accommodation and access community-based services, including transport.</li> <li>Ensure people are supported through access to accurate information, assistance and 'rehabilitation' where required.</li> <li>Improve transition across all age groups and support services.</li> <li>Ensure people are supported through access to accurate accessible information, assistance and 'rehabilitation' where required.</li> </ul>
People with a Learning Disability	<ul style="list-style-type: none"> <li>To support people with learning disabilities to live independently with access to early intervention services in the community; and greater public awareness and understanding of people with learning disabilities needs.</li> </ul>
Mental Health	<ul style="list-style-type: none"> <li>Increase understanding and awareness of mental health amongst the public, to reduce stigma and help people to seek support earlier.</li> <li>We need to improve emotional well-being and mental health for adults and children through timely early intervention and community support.</li> </ul>
Carers	<ul style="list-style-type: none"> <li>Support unpaid carers to care through flexible respite, access to accurate information, peer to peer support, effective care planning and through increased public understanding.</li> <li>Improve well-being of young carers and young adult carers and mitigate against long-term impacts</li> </ul>
Autism	<ul style="list-style-type: none"> <li>To provide more timely diagnosis of Autistic Spectrum Disorder and access to support services and information.</li> </ul>
Housing	<ul style="list-style-type: none"> <li>A multi-agency partnership approach to ensure appropriate housing and accommodation for older people and vulnerable citizens.</li> <li>To ensure effective use of Disabled Facilities Grants and appropriate partnership support and available resources.</li> <li>Homelessness requiring a collaborative response from public services and partners, especially the non-use of B&amp;B accommodation for young people, and through prevention and early intervention.</li> </ul>

# Rapid Innovation Initiative: Wales Innovation Pathway

The Gwent Regional Innovation Coordination Hub has adopted the Wales Innovation Framework for Health and Social Care in Figure 1. The Rapid Innovation Initiative seeks applications from any of the stages listed below.

Figure 1



# Rapid Innovation Initiative: Application Process

The initiative proposal & application process is explained below:

**Initiative Launch:** May 2026

The Rapid Innovation Initiative launches. A call for ideas and solutions is shared through all Gwent Integrated Service Partnership Boards.

**Submission Deadline:** 1<sup>st</sup> July 2026

Applicants submit their proposals by 1<sup>st</sup> July 2026. During the submission period, the GRICH can provide support to help applicants develop their proposals.

**Evaluation:** Early July 2026

Proposals are reviewed by GRICH against agreed criteria, including:

- how new or unique the idea is
- fit with Regional Partnership Board priorities and Well-being Goals
- feasibility of delivery
- potential for wider adoption
- readiness for implementation
- clarity of measures and baselines
- potential impact and benefit
- affordability

**Notification:** Mid-July 2026

Applicants are notified of the outcome of their proposals.

**Resource Allocation:** End of July 2026

Successful applicants are advised of the funding available. Funding is subject to signed funding agreements and regular delivery updates.

**Project Implementation:** August 2026 to January 2027

Funded projects begin delivery. GRICH provides regular check-ins to monitor progress and offer support.

**Monitoring and Evaluation:** September 2026 to January 2027

Projects are monitored throughout delivery. Progress, outcomes and early impact are captured through regular updates and an interim report to GRICH.

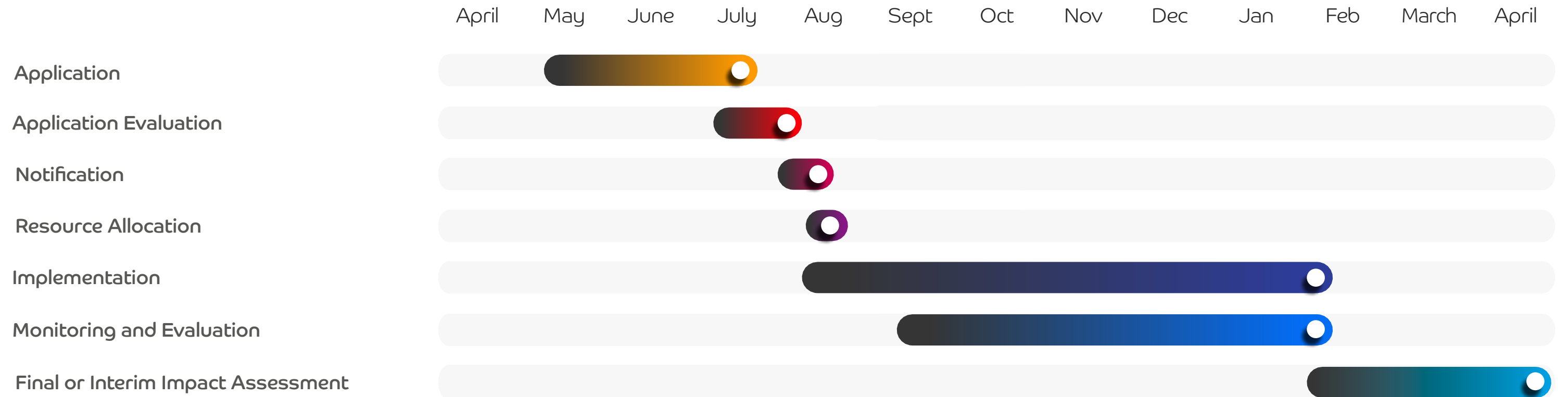
**Final or Interim Impact Assessment:** February 2027

Projects complete a formal impact report, setting out delivery progress, impact, value, learning and recommendations.

**Dissemination and Recognition:** April 2027

Project outcomes are shared across the region. Impact reports are used to showcase learning, demonstrate value and identify opportunities for wider adoption.

# Rapid Innovation Initiative: Application Process 2026-27



# Rapid Innovation Initiative: Applicant Guidance

---

**Eligibility Criteria:** Applicants must represent a public sector organisation, third sector organisation or community group within the Gwent region. The proposed project should align with the principles of long-term benefit, prevention, collaboration and integration, as set out in the Social Services and Well-being (Wales) Act 2014.

## Submission Process

- Proposals should be submitted via the application form on the Gwent Regional Innovation Coordination Hub webpage by the stated deadline.
- Applicants should ensure that all required sections of the application form are completed accurately.

## Application Components

- Project Title and Summary: clearly describe the proposal and its improvement objectives.
- Lead Organisation: identify the organisation responsible for delivery, receiving funding and reporting.
- Budget Requested: explain what funding is needed and how it will be used.
- Timeline: provide a project timeline showing key milestones and the expected completion date before March 2027.
- Expected Impact: explain the expected positive impact of the project and how this will be measured.
- Sustainability and Scalability: describe the potential for further development or wider adoption after the funding period.

## Evaluation Criteria

- innovation and uniqueness of the project
- feasibility and readiness for rapid deployment
- alignment with Gwent Regional Partnership Board priorities
- potential for positive impact
- potential for wider adoption or scale

# Rapid Innovation Initiative

---



Llywodraeth Cymru  
Welsh Government



Bwrdd Partneriaeth  
Rhanbarthol Gwent  
Gwent Regional  
Partnership Board

